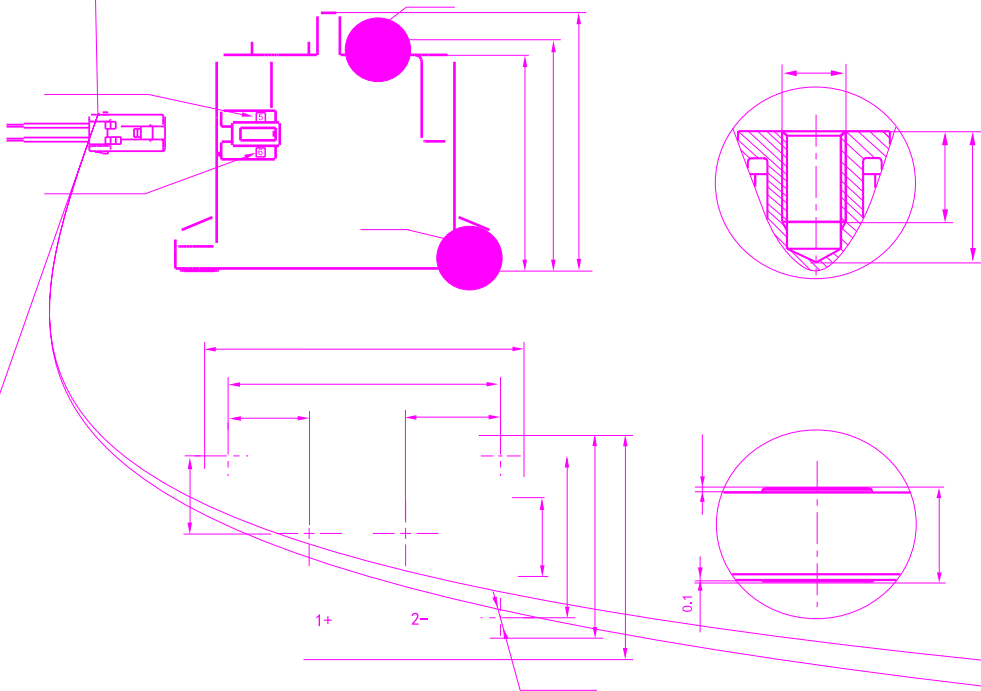


IP6K9K

		1a					
		≤0.5mΩ (at 300A)					
		300A					
		2×10 <sup>-5</sup>					
		450V型		750V型			
		1000VDC		1000VDC			
		2500A(320VDC)1		2500A(320VDC)1			
		135kW		225kW			
1)		2.5×10 <sup>4</sup>	22.5VDC, =1ms	400A, 300A	1.5×10 <sup>4</sup>	37.5VDC, =1ms	400A, 300A
		1	360VDC, =1ms	1350A, 300A			
			1×10 <sup>4</sup>	450VDC,80A		1×10 <sup>4</sup>	750VDC,80A
			3×10 <sup>3</sup>	450VDC,300A		1×10 <sup>3</sup>	750VDC,300A
2)		300A:					
		450A:60min					
		600A:20min					
		1200A:30s					
		3000A:0.6s					

1) 85°C, 23°C, 0.6s:5.4s,

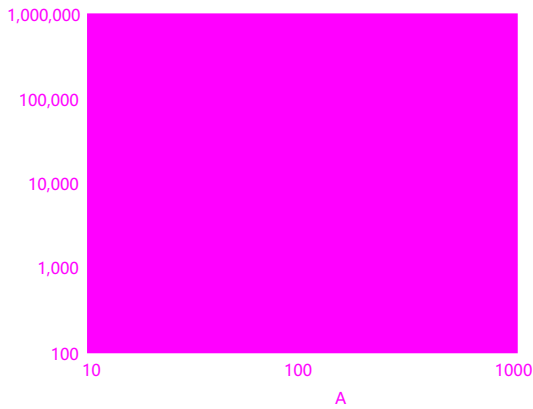
2) 85°C, 100 mm<sup>2</sup>, \* \*



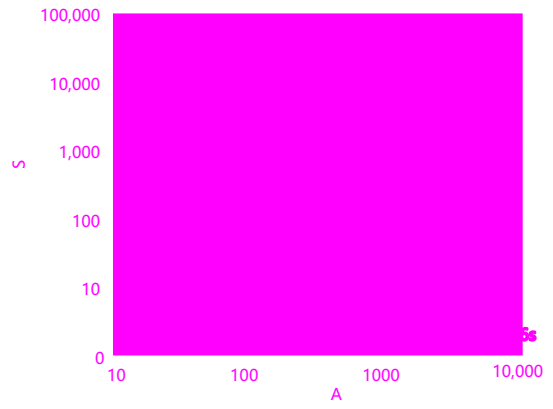




Electrical life curve



Tolerance curve



/ 0.6S 5.4S 85°C , 100mm<sup>2</sup>



1 9N-m~11N-m。 M5 3N-m~4N-m

M6螺钉	9N-m~11N-m	Ø6.0~Ø6.5mm	5mm	M5螺钉	3N-m~4N-m
------	------------	-------------	-----	------	-----------

2 100mm<sup>2</sup>  
3 0.2s 0.2s  
4  
5 3mm

声明/Statement:

