

产品特性/Product Features

- IP66
- IP6K9K
- 80A 85°C
- 12-750VDC
- 1000MΩ (1000VDC) , IEC 60664-1
-

触点参数 / Contact parameters

		1a	
		≤1m (at 20A)	
		80A	
		2×10 ⁻⁵	
		450V型	750V型
		1000VDC	1000VDC
		800A(320VDC)1	800A(320VDC)1
		36kW	60kW
1)		1×10 ⁻⁴ 450VDC, 80A	1×10 ⁻⁴ 750VDC, 80A
		7.5×10 ⁻⁴ 450VDC, 80A	7.5×10 ⁻⁴ 450VDC, 80A
2)		80A:	
		120A:30min	
		160A:1min	
		300A:10s	

1) 23°C, 0.6s:5.4s,

2) 85°C, 20 mm², " "

性能参数 / Performance parameters

		1000MΩ(1000VDC)
		3000VAC 1min
		3000VAC 1min
()		≤30ms
()		≤10ms
		196m/s ²
		490m/s ²
		10Hz ~ 500Hz 49m/s ²
		5% ~ 85%RH
		-40°C ~ 85°C
		5M
		225g

线圈参数 / Coil parameters

12	9	1.2	5.5W
24	≤18	2.4	6W

-40°C ~ 85°C)

订货标记示例

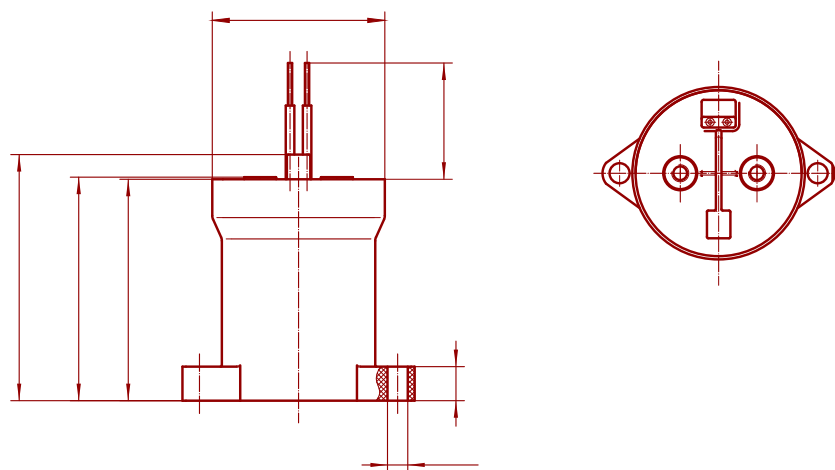
HFEVC - H Y 080 / 750 - 12 - C N SM -

- | | | |
|----|-----------|-----------------------------|
| 1 | HFEVC: | |
| 2 | T: | H: |
| 3 | F: | Y: |
| 4 | 080: | 80A |
| 5 | DC Blank: | 450V 750: 750V |
| 6 | 12: | DC12V 24: DC24V PWM: 9V~24V |
| 7 | C: | L: |
| 8 | Blank: | N: |
| 9 | Blank: | SM: |
| 10 | | |

1)

外形图、安装孔尺寸 / Outline drawing, mounting hole size

/Unit mm



性能曲线图 Performance graph



100 1000
85°C



使用注意事项 Precautions for use

1

M5	3N·m ~ 4N·m	Ø5.0~Ø5.5mm	3mm	M4螺钉	3N·m~4N·m
M8	10N·m ~ 12N·m	Ø5.0~Ø5.5mm	3mm	M4螺钉	3N·m~4N·m

2

20mm²

3

3mm